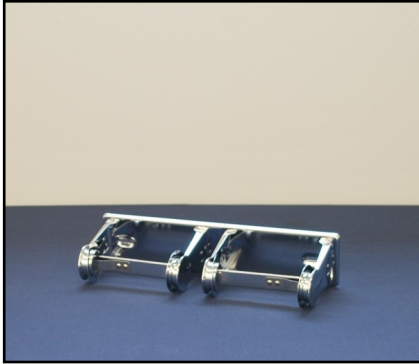
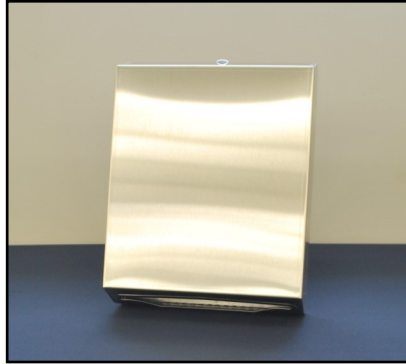


## Wall Mounted Accessories



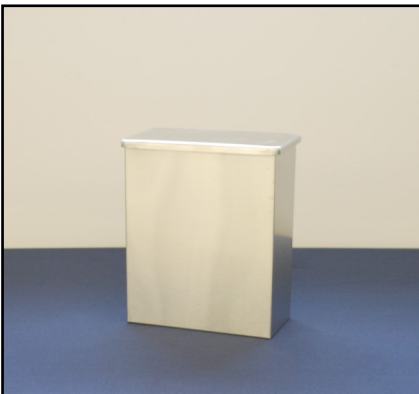
**Double Roll Toilet  
Tissue Dispenser**  
**\$22 ea. Qty** \_\_\_\_\_



**Stainless Steel C-Fold  
Towel Dispenser (towels not included)**  
**\$90 ea. Qty** \_\_\_\_\_



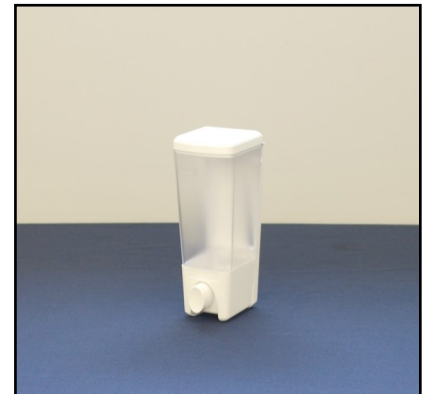
**EnMotion Hands Free  
Towel Dispenser (towels not included)**  
**\$120 ea. Qty** \_\_\_\_\_



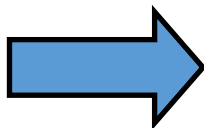
**Sanitary Napkin Disposal  
Stainless Steel**  
**\$50 ea. Qty** \_\_\_\_\_



**GOJO Soap Dispenser -  
Hands Free w/ Soap Refill**  
**\$90 ea. Qty** \_\_\_\_\_



**Foaming or Liquid  
Soap Dispenser**  
**\$40 ea. Qty** \_\_\_\_\_



**We Install!**



**\*Baby Changing Station**  
**\$275 ea. Qty** \_\_\_\_\_



**Stainless Steel  
Garbage Can**  
**\$125 ea. Qty** \_\_\_\_\_

Accessories listed on this page are installed on-site by the customer and/ or end user. Please use caution when deciding on final placement as some installations may be permanent (damage to surfaces can occur which may not be repairable). Use 3/4" Drywall screws for installation (included). \*Baby Changing Station is installed by COHSI pre-delivery\*